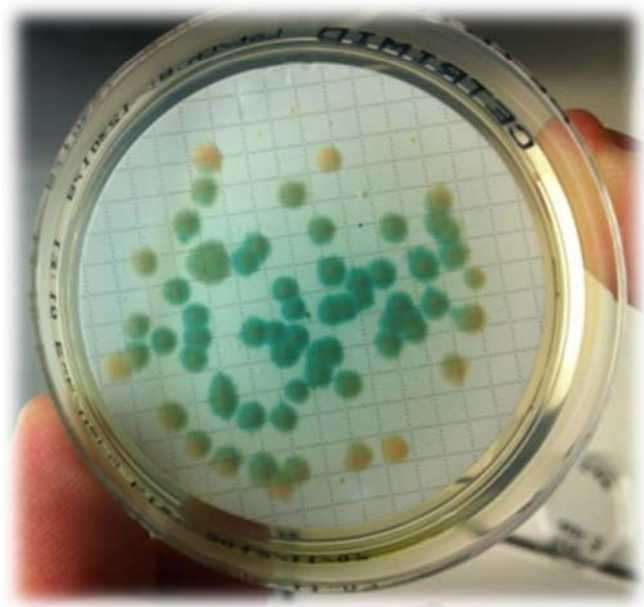
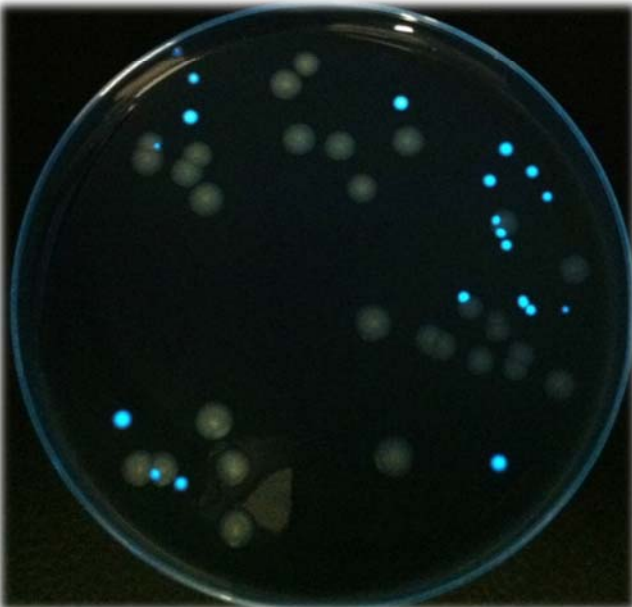
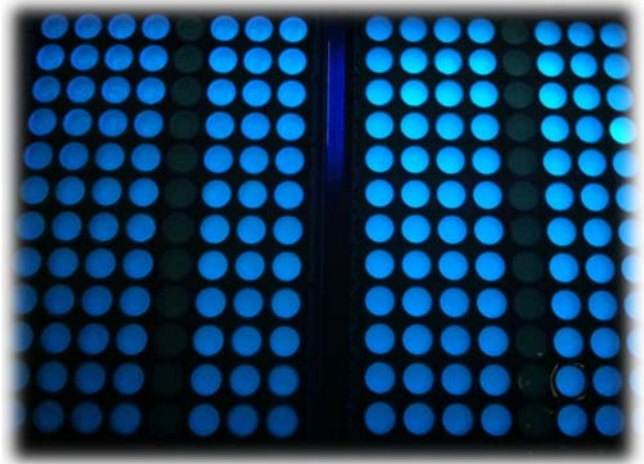


WATER MICROBIOLOGY



Participate in AGLAE's External Quality Control



A WAY OF WORKING THAT PROVIDES YOU WITH THE HIGHEST STANDARD OF RESULTS WITH CONFIDENTIALITY AND IMPARTIALITY

Each step of the way, AGLAE is there supporting you.

REGISTRATIONS FOR PROFICIENCY TESTING ARE DONE KNOWING THE WHOLE PROCESS, WITH A DETAILED AND RIGOROUS SCHEDULE



- ✓ The number of evaluations per year for each parameter is specified in the catalogue.
- ✓ AGLAE uses "express" shipments for your samples and makes sure of their distribution to your laboratory.
- ✓ A sufficient delay for reporting your analytical results.
- ✓ Via your member area, **enter your results and find instructions, assigned codes, reports, summaries of your results, certificate of participation...**

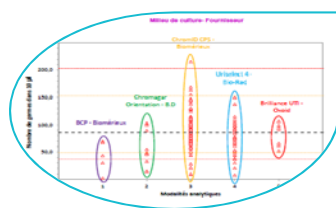
THE OPTIMISATION OF RISK MANAGEMENT FOR YOUR LABORATORY



You receive test samples close to those analysed in routine (materials ready for analysis) which enable you to validate the analytical chain from the receipt of the sample to the report of the result.

You have a better visibility of potential anomalies through:

- ✓ An appropriate test design (duplicate samples, repeated measurements),
- ✓ A large number of participants: around 240 laboratories for the blood culture (complete analysis), over 100 for the cyto bacteriology of urines.



AGLAE's detailed study:

- ✓ Influence of the analytical methods, manufacturers (equipment and consumables)? Differences between pair groups? ... factors that we study to help you identify the origin of any anomalies.
- ✓ For water microbiology, estimation of your own uncertainties in microbiology.
- ✓ **A personalized report validated by experts of the field** for most tests (list of the members at the end of the report).

ATTRACTIVE DISCOUNTS, PAYMENT CONDITIONS MADE EASIER

- Choose among the various programmes and benefit from discounts up to 15%,
- A possible payment in 2 or 3 folds depending on the amount your participation.
- Payment possible by cheque (in €), bank transfer, credit card on <https://www.helloasso.com/associations/a-g-l-a-e/paiements/aglae>

Amount of your invoice (excluding transport fees)	Discount
3000 ≤ Amount < 6000 € excl. VAT	5%
6000 ≤ Amount < 9000 € excl. VAT	10%
Amount ≥ 9000 € excl. VAT	15%

**And exclusively for AGLAE's members:
 experimental tests at an attractive price during the year**

PROGRAMME 11: MICROBIAL INDICATORS OF FAECAL CONTAMINATION BY MPN METHOD

Test materials are suitable for the check of analyses in fresh waters, saline and brackish waters and waste waters.



401 € excl. VAT – total amount for 4 tests (excluding transport costs)

125 participants in 2022 – EXPERIENCE > 25 YEARS



Need to test another method, evaluate your staff?

Order **additional test samples** (parcel in its entirety): **55 € excl. VAT** (excluding transport costs)

23M11.1 - Surface water - sent in February 2023 - Refrigerated parcel

Coliform bacteria,
Escherichia coli, Intestinal enterococci

23M11.2 - Bathing freshwater - sent in June 2023 - Refrigerated parcel

Coliform bacteria,
Escherichia coli, Intestinal enterococci

23M11.3 - Sea water - sent in August 2023 - Refrigerated parcel

Escherichia coli, Intestinal enterococci

23M11.4 - Waste water - sent in November 2023 - Refrigerated parcel

Escherichia coli, Intestinal enterococci

PARTICULARITIES

Coliform bacteria are provided only in surface water and bathing freshwater.

Coliform bacteria: parameter compatible with (NF EN) ISO 9308-2 and NF T90-413.

***Escherichia coli*:** parameter compatible with (NF EN) ISO 9308-2 and (NF EN) ISO 9308-3.

Intestinal enterococci: parameter compatible with (NF EN) ISO 7899-1 and Enterolert E.

PROGRAMME 30: MICROBIOLOGY IN CLEAN WATERS

Test materials are suitable for the check of analyses in public drinking waters, non-atypical natural mineral waters, swimming pool waters, waters for whirlpool baths, waters for multi-jet showers, healthcare waters as well as fresh* waters, waters in health care, pharmaceutical and cosmetic establishments. *Clear fresh waters for the spores of sulfite-reducing anaerobes.



720 € excl. VAT – total amount for 4 tests (excluding transport costs)

266 participants in 2022 – EXPERIENCE > 25 YEARS



Need to test another method, evaluate your staff?

Order **additional test samples** (parcel in its entirety): **90 € excl. VAT** (excluding transport costs)

23M30.1 - Clean water - sent in March 2023 - Refrigerated parcel

culturable micro-organisms at 22°C,
culturable micro-organisms at 36°C

Escherichia coli, coliform bacteria, Intestinal enterococci, spores of sulfite-reducing anaerobes

23M30.2 - Clean water - sent in June 2023 - Refrigerated parcel

culturable micro-organisms at 22°C,
culturable micro-organisms at 36°C

Escherichia coli, coliform bacteria, Intestinal enterococci, spores of sulfite-reducing anaerobes

23M30.3 - Clean water - sent in October 2023 - Refrigerated parcel

culturable micro-organisms at 22°C,
culturable micro-organisms at 36°C

Escherichia coli, coliform bacteria, Intestinal enterococci, spores of sulfite-reducing anaerobes

23M30.4 - Clean water - sent in December 2023 - Refrigerated parcel

culturable micro-organisms at 22°C,
culturable micro-organisms at 36°C

Escherichia coli, coliform bacteria, Intestinal enterococci, spores of sulfite-reducing anaerobes

PARTICULARITIES

Culturable micro-organisms at 22°C and culturable micro-organisms at 36°C: by incorporation.

Coliform bacteria, *Escherichia coli*: parameters compatible with (NF EN) ISO 9308-1 (2000), ISO 9308-1 (2014), ISO 9308-2 (2012) and (NF EN) ISO 9308-2 (2014).

Intestinal enterococci: parameter compatible with (NF EN) ISO 7899-2 and Enterolert DW.

For all the parameters of this programme, uncertainties are calculated and provided to the participants. The indicators are the repeatability uncertainty u_r^2 and the reproducibility uncertainty u_R^2 specific to each participant. The uncertainty evaluated for the whole profession is also presented.

☞ Find in the other microbiology programmes:

- ✓ programme 30A for the analysis of spores of sulfite-reducing anaerobes in fresh surface waters and waste waters,
- ✓ programme 86 for the analysis of culturable micro-organisms at 22°C and at 36°C after filtration.

PROGRAMME 30A: SPORES OF SULFITE-REDUCING ANAEROBES IN FRESH SURFACE WATERS AND WASTE WATERS

Test materials are suitable for the check of analyses in fresh waters and in waste waters.



236 € excl. VAT – total amount for 4 tests (excluding transport costs)

16 participants in 2022 – EXPERIENCE 2 YEARS



Need to test another method, evaluate your staff?

Order **additional test samples** (parcel in its entirety): **30 € excl. VAT** (excluding transport costs)

23M30A.1 - Surface water - sent in March 2023 - Refrigerated parcel

Spores of sulfite-reducing anaerobes

23M30A.2 - Waste water - sent in June 2023 - Refrigerated parcel

Spores of sulfite-reducing anaerobes

23M30A.3 - Surface water - sent in October 2023 - Refrigerated parcel

Spores of sulfite-reducing anaerobes

23M30A.4 - Waste water - sent in December 2023 - Refrigerated parcel

Spores of sulfite-reducing anaerobes

PARTICULARITIES

For this programme, uncertainties are calculated and provided to the participants. The indicators are the repeatability uncertainty u_r^2 and the reproducibility uncertainty u_R^2 specific to each participant. The uncertainty evaluated for the whole profession is also presented.

PROGRAMME 31: *PSEUDOMONAS AERUGINOSA* AND PATHOGENIC STAPHYLOCOCCI IN CLEAN WATERS

Test materials are suitable for the check of analyses in public drinking waters, non-atypical natural mineral waters, swimming pool waters, waters for whirlpool baths, waters for multi-jet showers, healthcare waters and bacteriologically controlled waters as well as fresh waters, waters in health care, pharmaceutical and cosmetic establishments.



486 € excl. VAT – total amount for 4 tests (excluding transport costs)

224 participants in 2022 – EXPERIENCE > 25 YEARS



Need to test another method, evaluate your staff?

Order **additional test samples** (parcel in its entirety): **65 € excl. VAT** (excluding transport costs)

23M31.1 - Clean water - sent in January 2023 - Refrigerated parcel

Pseudomonas aeruginosa,
pathogenic staphylococci (coagulase positive)

23M31.2 - Clean water - sent in April 2023 - Refrigerated parcel

Pseudomonas aeruginosa,
pathogenic staphylococci (coagulase positive)

23M31.3 - Clean water - sent in October 2023 - Refrigerated parcel

Pseudomonas aeruginosa,
pathogenic staphylococci (coagulase positive)

23M31.4 - Clean water - sent in December 2023 - Refrigerated parcel

Pseudomonas aeruginosa,
pathogenic staphylococci (coagulase positive)

PARTICULARITIES

Pseudomonas aeruginosa: parameter compatible with (NF EN) ISO 16266 and ISO 16266-2.

For all the parameters of this programme, uncertainties are calculated and provided to the participants. The indicators are the repeatability uncertainty ur^2 and the reproducibility uncertainty uR^2 specific to each participant. The uncertainty evaluated for the whole profession is also presented.

PROGRAMME 31A: PATHOGENIC STAPHYLOCOCCI IN SALINE WATERS

188 € excl. VAT - total amount for 2 tests (excluding transport costs)

9 participants in 2022 – EXPERIENCE: 1 YEAR



Need to test another method, evaluate your staff?

Order **additional test samples** (parcel in its entirety): **50 € excl. VAT** (excluding transport costs)

23M31A.1 - Saline water - sent in June 2023 - Refrigerated parcel

pathogenic staphylococci (coagulase positive)

23M31A.2 - Saline water - sent in December 2023 - Refrigerated parcel

pathogenic staphylococci (coagulase positive)

PROGRAMME 32: *LEGIONELLA* AND *LEGIONELLA PNEUMOPHILA* IN CLEAN WATERS BY CULTURE

Test materials are suitable for the check of analyses in public drinking waters, domestic hot waters, natural mineral waters for thermal use, swimming pool waters and equivalent, waters from misting systems as well as fresh waters and process waters except coloured and/or unfilterable water requiring centrifugation or following the 'waste water' protocol.



540 € excl. VAT – total amount for 3 tests (excluding transport costs)

237 participants in 2022 – EXPERIENCE > 20 YEARS



Need to test another method, evaluate your staff?

Order **additional test samples** (parcel in its entirety): **90 € excl. VAT** (excluding transport costs)

23M32.1 – Clean water - sent in February 2023 - Refrigerated parcel

Legionella pneumophila, Legionella

23M32.2 - Clean water - sent in June 2023 - Refrigerated parcel

Legionella pneumophila, Legionella

23M32.3 - Clean water - sent in October 2023 - Refrigerated parcel

Legionella pneumophila, Legionella

PARTICULARITIES

Refrigerated parcel to favour the reception of similar samples in France and internationally.

Legionella and *Legionella pneumophila*: parameters compatible with NF T90-431 and ISO 11731 (2017) [Matrix A; Procedures 1 and 7; Medium C].

PROGRAMME 33: *LEGIONELLA* AND *LEGIONELLA PNEUMOPHILA* IN WASTE WATERS BY CULTURE

Test materials are suitable for the check of analyses in surface waters, in industrial waters, in waters from cooling installations by water dispersion in air flows ('IRDEFA'), in natural waters as well as fresh waters and process waters coloured and/or unfilterable requiring centrifugation or following the 'waste water' protocol.



580 € excl. VAT – total amount for 3 tests (excluding transport costs)

135 participants in 2022 – EXPERIENCE > 15 YEARS



Need to test another method, evaluate your staff?

Order **additional test samples** (parcel in its entirety): **100 € excl. VAT** (excluding transport costs)

23M33.1 - Waste water - sent in January 2023 - Refrigerated parcel

Legionella pneumophila, Legionella

23M33.2 - Waste water - sent in March 2023 - Refrigerated parcel

Legionella pneumophila, Legionella

23M33.3 - Waste water - sent in September 2023 - Refrigerated parcel

Legionella pneumophila, Legionella

PARTICULARITIES

Refrigerated parcel to favour the reception of identical samples in France and internationally.

Legionella, Legionella pneumophila: parameters compatible with NF T90-431 and ISO 11731 (2017) [Matrix B; Procedures 1, 8, 9, 10 and 11; Medium C].

'IRDEFA': Specific waste waters used, waters similar to waters from cooling installations by water dispersion in air flows.

PROGRAMME 35: *LEGIONELLA* AND *LEGIONELLA PNEUMOPHILA* IN CLEAN WATERS BY PCR

Test materials are suitable for the check of analyses in public drinking waters, domestic hot waters, natural mineral waters for thermal use, swimming pool waters and equivalent, waters from misting systems as well as fresh waters.



590 € excl. VAT – total amount for 2 tests (excluding transport costs)

26 participants in 2022 – EXPERIENCE 15 YEARS



Need to test another method, evaluate your staff?

Order **additional test samples** (parcel in its entirety): **150 € excl. VAT** (excluding transport costs)

23M35.1 - Clean water - sent in February 2023 - Refrigerated parcel

Legionella, Legionella pneumophila

23M35.2 - Clean water - sent in October 2023 - Refrigerated parcel

Legionella, Legionella pneumophila

PARTICULARITIES

Legionella, Legionella pneumophila: parameters compatible with NF T90-471 and ISO/TS 12869.

The analysis method used must lead to quantitative results. Presence/absence type results cannot be processed.

PROGRAMME 36: *LEGIONELLA* AND *LEGIONELLA PNEUMOPHILA* IN WASTE WATERS BY PCR

Test materials are suitable for the check of analyses in surface waters, industrial waters, waters for cooling installations by water dispersion in an air flow (IRDEFA), natural waters as well as in process waters.



686 € excl. VAT – total amount for 2 tests (excluding transport costs)

13 participants in 2022 – EXPERIENCE > 5 YEARS



Need to test another method, evaluate your staff?

Order **additional test samples** (parcel in its entirety): **175 € excl. VAT** (excluding transport costs)

23M36.1 - Waste water - sent in May 2023 - Refrigerated parcel

Legionella, Legionella pneumophila

23M36.2 - Waste water - sent in September 2023 - Refrigerated parcel

Legionella, Legionella pneumophila

PARTICULARITIES

Legionella, Legionella pneumophila: parameters compatible with NF T90-471 and ISO/TS 12869.

'IRDEFA': specific waste waters used, waters similar to waters from cooling installations by water dispersion in air flows.

The analysis method used must lead to quantitative results. Presence/absence type results cannot be processed.

PROGRAMME 37: SALMONELLA IN FRESH WATERS



136 € excl. VAT – total amount for 2 tests (excluding transport costs)

87 participants in 2022 – EXPERIENCE > 15 YEARS



Need to test another method, evaluate your staff?

Order **additional test samples** (parcel in its entirety): **35 € excl. VAT** (excluding transport costs)

23M37.1 - Clean water - sent in March 2023 - Refrigerated parcel

Test materials are suitable for the check of analyses in public drinking waters and non-atypical natural mineral waters.

Salmonella

23M37.2 - Surface water - sent in November 2023 - Refrigerated parcel

Test materials are suitable for the check of analyses in fresh surface waters used for the production of waters intended for human consumption and non-atypical natural mineral waters.

Salmonella

PARTICULARITIES

Qualitative analysis: presence / absence.

PROGRAMME 38: YEASTS IN CLEAN WATERS

Test materials are suitable for the check of analyses in public drinking waters, non-atypical natural mineral waters and bacteriologically controlled waters as well as fresh waters, waters in health care, pharmaceutical and cosmetic establishments.



138 € excl. VAT – total amount for 2 tests (excluding transport costs)

20 participants in 2022 – EXPERIENCE > 5 YEARS



Need to test another method, evaluate your staff?

Order **additional test samples** (parcel in its entirety): **35 € excl. VAT** (excluding transport costs)

23M38.1 - Clean water - sent in January 2023 - Refrigerated parcel

Yeasts

23M38.2 - Clean water - sent in June 2023 - Refrigerated parcel

Yeasts

PARTICULARITIES

For this programme, uncertainties are calculated and provided to the participants. The indicators are the repeatability uncertainty ur^2 and the reproducibility uncertainty uR^2 specific to each participant. The uncertainty evaluated for the whole profession is also presented.

PROGRAMME 38A: MOULD IN CLEAN WATERS

Test materials are suitable for the check of analyses in public drinking waters, non-atypical natural mineral waters and bacteriologically controlled waters as well as fresh waters, waters in health care, pharmaceutical and cosmetic establishments.

188 € excl. VAT – total amount for 2 tests (excluding transport costs)

29 participants in 2022 – EXPERIENCE 5 YEARS



Need to test another method, evaluate your staff?

Order **additional test samples** (parcel in its entirety): **50 € excl. VAT** (excluding transport costs)

23M38A.1 - Clean water - sent in January 2023 - Refrigerated parcel

Mould

23M38A.2 - Clean water - sent in June 2023 - Refrigerated parcel

Mould

PARTICULARITIES

For this programme, uncertainties are calculated and provided to the participants. The indicators are the repeatability uncertainty u_r^2 and the reproducibility uncertainty u_R^2 specific to each participant. The uncertainty evaluated for the whole profession is also presented.

PROGRAMME 130: BACTERIOPHAGES IN WATERS

700 € excl. VAT - total amount for 2 tests (excluding transport fees)

New

New in 2023

23M130.1 - Fresh water - sent in April 2023 - Refrigerated parcel

Somatic coliphages and F-specific RNA bacteriophages

23M130.2 – Waste water - sent in October 2023 - Refrigerated parcel

Somatic coliphages and F-specific RNA bacteriophages