

# AGLAE 2024 PROFICIENCY TESTING SCHEME COSMETICS



## **AGLAE Association**

Parc des Pyramides  
427 rue des Bourreliers  
59320 Hallennes lez Haubourdin  
France  
☎ +33 (0)3 20 16 91 40  
[www.association-aglae.fr](http://www.association-aglae.fr)  
[contact@association-aglae.fr](mailto:contact@association-aglae.fr)

## New in 2024 - cosmetics field

### New programmes in the catalogue

#### Cosmetics

- ✓ 111 Aerobic mesophilic bacteria and yeast/mould in cosmetics
- ✓ 112 Specified microorganisms in cosmetics

## List of PTS – cosmetics field

Cosmetics
110 Challenge test in cosmetics
111 Aerobic mesophilic bacteria and yeast/mould in cosmetics
112 Specified microorganisms in cosmetics

## Glossary of the matrices used

Name of the matrix for <b>Cosmetics</b>	Below the matrices that can be used to comply with the representativity of the specified matrix			
	Moisturising lotion	Cream	Lotion	Moisturising gel
<b>Cosmetic products</b>	<b>x</b>	<b>x</b>	<b>x</b>	<b>x</b>

## Participate in AGLAE's External Quality Control



A WAY OF WORKING THAT PROVIDES YOU WITH THE HIGHEST STANDARD OF RESULTS WITH CONFIDENTIALITY AND IMPARTIALITY

Each step of the way, AGLAE is there supporting you.

### REGISTRATIONS FOR PROFICIENCY TESTING ARE DONE KNOWING THE WHOLE PROCESS, WITH A DETAILED AND RIGOUROUS SCHEDULE

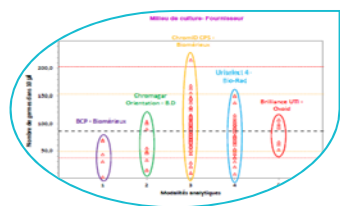


- ✓ The number of evaluations per year for each parameter is specified in the catalogue, concentration levels and stabilisation are available on request.
- ✓ AGLAE uses "express" shipments for your samples and makes sure of their distribution to your laboratory.
- ✓ A sufficient delay to analyse and the report the results.
- ✓ Via your member area, **enter your results and find instructions, assigned codes, reports, summaries of your results, certificate of participation...**

### THE OPTIMISATION OF RISK MANAGEMENT FOR YOUR LABORATORY



- You have a better visibility of potential anomalies through:
- ✓ An appropriate test design (duplicate samples, repeated measurements),
  - ✓ A large number of participants: around 200 laboratories in the field of 'base' microbiology and 'base' physico-chemical analyses.



- AGLAE's detailed study:
- ✓ Influence of the analytical methods, manufacturers (equipment and consumables)... factors that we study to help you improve the quality of your analyses,
  - ✓ For waters intended for medical use and water microbiology, estimation of your own uncertainties in microbiology,
  - ✓ Check of your uncertainty estimates in chemistry (zeta-score),
  - ✓ A report validated by experts of the field and personalised for most tests.

### ATTRACTIVE DISCOUNTS, PAYMENT CONDITIONS MADE EASIER

- Choose among the various programmes and benefit from discounts up to 15%,
- A possible payment in 2 or 3 folds depending on the amount your participation.
- Payment possible by cheque (in €), bank transfer, credit card on <https://www.helloasso.com/associations/a-g-l-a-e/paiements/aglae>

Amount of your invoice (excluding transport cost)	Discount
3000 ≤ Amount < 6000 € excl. VAT	<b>5%</b>
6000 ≤ Amount < 9000 € excl. VAT	<b>10%</b>
Amount ≥ 9000 € excl. VAT	<b>15%</b>

## Additional services



### ADDITIONAL TEST SAMPLES TO TEST ANOTHER METHOD, EVALUATE A TECHNICIAN

- ✓ Test samples available for almost all the tests at half price.
- ✓ Besides your usual distribution, you receive one (or several) additional parcel(s).
- ✓ The results of these samples are not statistically processed by AGLAE but for most tests you get a sheet **in your results file** where to **calculate your z-score**. Note that this sheet can also be used in case of unit error, incorrect results' report, etc.

⇒ Check the **list of samples and their price on your Member Area** (Downloads / Catalogues) and contact us to receive a quote. These additional samples need to be ordered after you registration for the test and before the shipment.



### QUALITY CONTROL MATERIALS FOR YOUR MONITORING AND IMPROVEMENT OF YOUR ANALYTICAL PERFORMANCE

- ✓ Materials coming from the **solid matrices tests: sediments, sludge, polluted sites and soils**.
- ✓ Purchased at any time during the year and delivered with a certificate presenting the precision values obtained during the test (assigned value and uncertainties).

⇒ Check the **list of materials, prices and available quantities on your Member Area** (Downloads / Catalogues) and contact us to receive a quote.

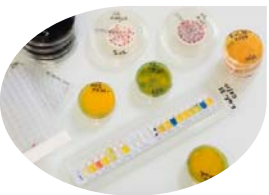


### TRAINING SESSIONS IN MICROBIOLOGY: ONE TOPIC POSSIBLY PROVIDED IN ENGLISH

Two-day on-line session to become operational for:

- ✓ Characterising a microbiological method according to ISO 13843 in order to validate it

⇒ *Should you be interested in such a session, please get back to us.*



### CUSTOMIZED SERVICE: 'PERFORMANCE CHARACTERISTICS OF MICROBIOLOGICAL METHODS'

Do you need to characterise specific methods?

AGLAE can provide you support to establish methods performance characteristics, in conformity with ISO 13843\*. Benefit from AGLAE's technical and statistical experience to validate your microbiological method.

\* *Water quality — Requirements for establishing performance characteristics of quantitative microbiological methods*

⇒ *Should you have such needs, contact us to study your request together and issue a quote.*



### SUMMARY OF YOUR RESULTS FOR WATER MICROBIOLOGY AND WATER FOR MEDICAL USE TESTS

Gather at any time your results and performance: for a selected period, your results are grouped in an Excel file; this is a tool to support you in your Internal Quality Control, your audits...

## PROGRAMME 110: CHALLENGE TEST IN COSMETICS

*Evaluation of the antimicrobial protection of **cosmetic products**.*



€ 492 excl. VAT - total amount for the test (excluding transport costs)

18 participants in 2023 - EXPERIENCE > 5 YEARS

### Parameters to analyse

#### 24M110.1 - Cosmetic product - sent in November 2024

Percent reductions at 48 hours, 7 days and 14 days for *Candida albicans* / lotion\*

Percent reductions at 48 hours, 7 days and 14 days for *Staphylococcus aureus* / lotion\*

*\*Subject to technical change. Final couples communicated in the instructions, one week before sending the test sample.*

### PARTICULARITIES



Perform preservation efficacy tests on the 2 bottles for the 2 couples bacterial strain / cosmetic product following the ISO 11930 standard or any equivalent internal method.  
Bacterial strains not provided.

**Presence of preservatives in the cosmetic products, the efficacy of the neutraliser will have to be checked. Implementation details to be specified on the results form.**



#### Other recommended proficiency tests:

- ↗ Programme 111 'Aerobic mesophilic bacteria and yeast / mould in cosmetics'
- ↗ Programme 112 'Specified microorganisms in cosmetics'

**PROGRAMME 111:**  
**AEROBIC MESOPHILIC BACTERIA AND YEAST/MOULD IN COSMETICS**

*Enumeration of aerobic mesophilic bacteria and yeast/mould*

**New**

€ 511 excl. VAT - total amount for 2 tests (excluding transport costs)

New in 2024

Parameters to analyse
<b>24M111.1 - Cosmetic product - sent in July 2024 - Refrigerated parcel</b>
Aerobic mesophilic bacteria
<b>24M111.2 - Cosmetic product - sent in September 2024 - Refrigerated parcel</b>
Yeast / mould

**PARTICULARITIES**



Presence of preservatives, the applicability of the method will have to be checked (neutralisation of the preservative). Implementation details to be specified on the results form.

A minimum of 10 participants is required.

The cosmetic product will be a cream, a lotion or a gel.

Enumeration of aerobic mesophilic bacteria according to ISO 21149 or equivalent method

Enumeration of yeast and mould according to ISO 16212 or equivalent method



**Other recommended proficiency tests:**

- ↪ Programme 110 'Challenge test in cosmetics'
- ↪ Programme 112 'Specified microorganisms in cosmetics'

## PROGRAMME 112: SPECIFIED MICROORGANISMS IN COSMETICS

*Detection of specified micro-organisms: Escherichia coli, Candida albicans, Staphylococcus aureus and Pseudomonas aeruginosa*

**New**

€ 423 excl. VAT - total amount for 2 tests (excluding transport costs)

New in 2024

Parameters to analyse
<b>24M112.1 - Cosmetic product - sent in June 2024 - Refrigerated parcel</b>
<i>Escherichia coli, Candida albicans</i>
<b>24M112.1 - Cosmetic product - sent in November 2024 - Refrigerated parcel</b>
<i>Staphylococcus aureus, Pseudomonas aeruginosa</i>

### PARTICULARITIES



Presence of preservatives, the applicability of the method will have to be checked (neutralisation of the preservative). Implementation details to be specified on the results form.

A minimum of 8 participants is required

The cosmetic product will be a cream, a lotion or a gel.

Detection of *Escherichia coli* according to ISO 21150

Detection of *Candida albicans* according to ISO 18416

Detection of *Staphylococcus aureus* according to ISO 22718

Detection of *Pseudomonas aeruginosa* according to ISO 22717



#### Other recommended proficiency tests:

- ↗ Programme 110 'Challenge test in cosmetics'
- ↗ Programme 111 'Aerobic mesophilic bacteria and yeast / mould in cosmetics'