

AGLAE 2025

PROFICIENCY TESTING SCHEME CATALOGUE

ORGANIC POLLUTANTS IN WASTE WATERS



AGLAE Association

Parc des Pyramides
427 rue des Bourreliers
59320 Hallennes lez Haubourdin
France

☎ +33 (0)3 20 16 91 40

www.association-aglae.fr

contact@association-aglae.fr

PTS organic pollutants in waste waters

4E Volatile organohalogenes and benzene derivatives in waste waters
4Eb Volatile organohalogenes and benzene derivatives in waste waters at low concentration levels
4F Methanol in waste waters
20B Chlorophenols in waste waters
21B Alkylphenols in waste waters
22B Chloroanilines in waste waters
23B Organo-tin compounds in waste waters
24B Brominated Diphenyl Ethers in waste waters
24C HBCDD in fresh waters and HBCDD, HBB in waste waters
25B Biphenyl in waste waters
26B DEHP in waste waters
27B C10-C13 chloroalkanes (SCCPs) in waste waters
28B Chloroacetic acid in waste waters
29B Epichlorohydrin in waste waters
52 AOX in waters
55A Glyphosate, AMPA and aminotriazole in waste waters
59A Perfluorinated compounds in waste waters
59B AOF in waste waters
71 PAHs and PCBs in waste waters
72A Pesticides and degradation residues - List 1 - in waste waters
72B Pesticides and degradation residues - List 2 - in waste waters
73 Alkylphenol ethoxylates in waste waters

* In which tests are provided the various organic micropollutants?

A document enables you to search by name and/or CAS code and find out in which programme(s) and matrix(ces) they are provided.
This index is available upon request.

Glossary of the matrices used

Name of the matrix for water chemistry	Below the matrices that can be used, alone or mixed, to comply with the representativity of the specified matrix	
	Waste waters from urban WWTP	Synthetic waters
Waste waters	x	x

WWTP: Waste Water Treatment Plant

Participate in AGLAE's External Quality Control



A WAY OF WORKING THAT PROVIDES YOU WITH THE HIGHEST STANDARD OF RESULTS WITH CONFIDENTIALITY AND IMPARTIALITY

Each step of the way, AGLAE is there supporting you.

REGISTRATIONS FOR PROFICIENCY TESTING ARE DONE KNOWING THE WHOLE PROCESS, WITH A DETAILED AND RIGOROUS SCHEDULE



- ✓ The number of evaluations per year for each parameter is specified in the catalogue, concentration levels and stabilisation are available on request.
- ✓ AGLAE uses "express" shipments for your samples and makes sure of their distribution to your laboratory.
- ✓ A sufficient delay to analyse and the report the results.
- ✓ Via your member area, **enter your results and find instructions, assigned codes, reports, summaries of your results, certificate of participation...**

THE OPTIMISATION OF RISK MANAGEMENT FOR YOUR LABORATORY

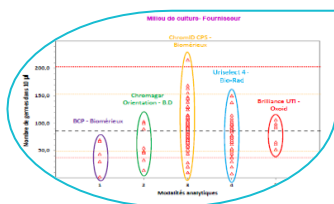


You have a better visibility of potential anomalies through:

- ✓ An appropriate test design (duplicate samples, repeated measurements),
- ✓ A large number of participants: around 200 laboratories in the field of 'base' microbiology and 'base' physico-chemical analyses.

AGLAE's detailed study:

- ✓ Influence of the analytical methods, manufacturers (equipment and consumables)... factors that we study to help you improve the quality of your analyses,
- ✓ For waters intended for medical use and water microbiology, estimation of your own uncertainties in microbiology,
- ✓ Check of your uncertainty estimates in chemistry (zeta-score),
- ✓ A report validated by experts of the field and personalised for most tests.



ATTRACTIVE DISCOUNTS, PAYMENT CONDITIONS MADE EASIER

- Choose among the various programmes and benefit from discounts up to 15%,
- A possible payment in 2 or 3 folds depending on the amount your participation.
- Payment possible by cheque (in €), bank transfer, credit card on <https://www.helloasso.com/associations/a-g-l-a-e/paiements/aglae>

Amount of your invoice (excluding transport cost)	Discount
3000 ≤ Amount < 6000 € excl. VAT	5%
6000 ≤ Amount < 9000 € excl. VAT	10%
Amount ≥ 9000 € excl. VAT	15%

Additional services



ADDITIONAL TEST SAMPLES TO TEST ANOTHER METHOD, EVALUATE A TECHNICIAN

- ✓ Test samples available for almost all the tests at half price.
- ✓ Besides your usual distribution, you receive one (or several) additional parcel(s).
- ✓ The results of these samples are not statistically processed by AGLAE but for most tests you get a sheet **in your results file** where to **calculate your z-score**. Note that this sheet can also be used in case of unit error, incorrect results' report, etc.

⇒ Check the **list of samples and their price on your Member Area** (Downloads / Catalogues) and contact us to receive a quote. These additional samples need to be ordered after you registration for the test and up to 2 weeks before the shipment.



QUALITY CONTROL MATERIALS FOR YOUR MONITORING AND IMPROVEMENT OF YOUR ANALYTICAL PERFORMANCE

- ✓ Materials coming from the **solid matrices tests: sediments, sludge, polluted sites and soils**.
- ✓ Purchased at any time during the year and delivered with a certificate presenting the precision values obtained during the test (assigned value and uncertainties).

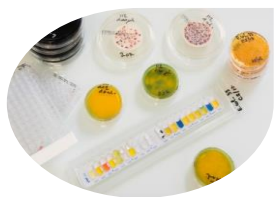
⇒ Check the **list of materials, prices and available quantities on your Member Area** (Downloads / Catalogues) and contact us to receive a quote.



TRAINING SESSIONS IN MICROBIOLOGY: ONE TOPIC POSSIBLY PROVIDED IN ENGLISH

Two-day on-line session to become operational for:

- ✓ Characterising a microbiological method according to ISO 13843 in order to validate it
- ⇒ Should you be interested in such a session, please get back to us.



CUSTOMIZED SERVICE: 'PERFORMANCE CHARACTERISTICS OF MICROBIOLOGICAL METHODS'

Do you need to characterise specific methods?

AGLAE can provide you support to establish methods performance characteristics, in conformity with ISO 13843*. Benefit from AGLAE's technical and statistical experience to validate your microbiological method.

* *Water quality — Requirements for establishing performance characteristics of quantitative microbiological methods*

⇒ Should you have such needs, contact us to study your request together and issue a quote.



SUMMARY OF YOUR RESULTS FOR WATER MICROBIOLOGY AND WATER FOR MEDICAL USE TESTS

Gather at any time your results and performance: for a selected period, your results are grouped in an Excel file; this is a tool to support you in your Internal Quality Control, your audits...

Programmes' description

One programme includes from 1 to 4 proficiency tests (= rounds).

Prices specified in the catalogue are for the complete programme, which corresponds to several rounds most of the time.

When purchasing a complete programme, the price per test is lower.

Content

For each programme's description, you will find the technical content of the test : volumes, parameters, matrices, dispatch month...

The concentration levels and stabilisation modalities of the samples are available on request.

The samples' dispatch months are given for information only.

Transport costs depend on the destination and tests selected within the programmes; contact us to get a quote.

Our aim is to prepare materials as close as possible to the samples analysed in routine: the contamination levels can therefore be very low or very high.

➔ **Our concentration levels are available on request.**

Caption



This logo shows that the programme is accredited by LABORATORIES section in compliance with ISO/IEC 17043.

PROGRAMME 4E: VOLATILE ORGANOHALOGENS AND BENZENE DERIVATIVES IN WASTE WATERS



€ 582 excl. VAT - total amount for 1 test (excluding transport costs)

35 participants in 2024 – EXPERIENCE > 25 YEARS



Need to test another method, evaluate your staff?

Order **additional test samples** (parcel in its entirety): € 295 excl. VAT (excluding transport costs)

1 SHIPMENT / YEAR - REFRIGERATED PARCEL

Month	1	2	3	4	5	6	7	8	9	10	11	12
Test	25M4E.1											
Matrix	Waste water											

Parameters to analyse

BTEX: benzene, ethylbenzene, isopropylbenzene, toluene, xylene ortho, xylene para + xylene meta, total xylenes

VOHs: 1,2-dichloroethane, bromoform, chloroform, dibromochloromethane, dichlorobromomethane, tetrachloroethylene, trichloroethylene, vinyl chloride

chlorobenzenes - light: 1,2-dichlorobenzene, 1,3-dichlorobenzene, 1,4-dichlorobenzene, chlorobenzene, dichlorobenzenes (sum of the 3 isomers)

chlorotoluenes: 2-chlorotoluene, 3-chlorotoluene, 4-chlorotoluene, chlorotoluenes (sum of the 3 isomers),

VOHs: 1,1,1-trichloroethane, 1,1,2,2-tetrachloroethane, 1,1,2-trichloroethane, 1,1-dichloroethane, 1,1-dichloroethylene, 1,2-dichloroethylene (cis+trans), 1,2-dichloroethylene cis, 1,2-dichloroethylene trans, 3-chloroprene (3-chloropropene), carbon tetrachloride, chloroprene, dichloromethane, hexachloroethane

nitro-aromatics: 1-chloro-2-nitrobenzene, 1-chloro-3-nitrobenzene, 1-chloro-4-nitrobenzene, 2-nitrotoluene, nitrobenzene

chlorobenzenes: 1,2,4,5-tetrachlorobenzene, tetrachlorobenzenes (sum of the 3 isomers), 1,2,3-trichlorobenzene, 1,2,4-trichlorobenzene, 1,3,5-trichlorobenzene, trichlorobenzenes (sum of the 3 isomers), hexachlorobenzene, pentachlorobenzene

hexachlorobutadiene

PARTICULARITIES



For the group of parameters: hexachlorobutadiene, chlorobenzenes and nitro-aromatics, you will receive a concentrated solution in addition to the bottles of waste water. The analyses have to be carried out with the reconstituted samples.



Other recommended proficiency tests:

↪ **Programme 4Eb** 'Volatile organohalogenes and benzene derivatives in waste waters at low concentration levels - **'Environmental approval'** (contact us for the concentration ranges).

PROGRAMME 4Eb: VOLATILE ORGANOHALOGENS AND BENZENE DERIVATIVES IN WASTE WATERS AT LOW CONCENTRATION LEVELS



€ 327 excl. VAT - total amount for 1 test (excluding transport costs)

37 participants in 2024 – EXPERIENCE > 25 YEARS



Need to test another method, evaluate your staff?

Order **additional test samples** (parcel in its entirety): € 165 excl. VAT
(excluding transport costs)

1 SHIPMENT / YEAR - REFRIGERATED PARCEL

Month	1	2	3	4	5	6	7	8	9	10	11	12
Test									25M4Eb.1			
Matrix									Waste water			

Parameters to analyse

BTEX: benzene, ethylbenzene, isopropylbenzene, toluene, xylene ortho, xylene para + xylene meta, total xylenes

VOHs: 1,2-dichloroethane, bromoform, chloroform, dibromochloromethane, dichlorobromomethane, tetrachloroethylene, trichloroethylene, vinyl chloride

chlorobenzenes - light: 1,2-dichlorobenzene, 1,3-dichlorobenzene, 1,4-dichlorobenzene, chlorobenzene, dichlorobenzenes (sum of the 3 isomers)

chlorotoluenes: 2-chlorotoluene, 3-chlorotoluene, 4-chlorotoluene, chlorotoluenes (sum of the 3 isomers)

VOHs: 1,1,1-trichloroethane, 1,1,2,2-tetrachloroethane, 1,1,2-trichloroethane, 1,1-dichloroethane, 1,1-dichloroethylene, 1,2-dichloroethylene (cis+trans), 1,2-dichloroethylene cis, 1,2-dichloroethylene trans, 3-chloroprene (3-chloropropene), carbon tetrachloride, chloroprene, dichloromethane, hexachloroethane

nitro-aromatics: 1-chloro-2-nitrobenzene, 1-chloro-3-nitrobenzene, 1-chloro-4-nitrobenzene, 2-nitrotoluene, nitrobenzene

chlorobenzenes: 1,2,4,5-tetrachlorobenzene, tetrachlorobenzenes (sum of the 3 isomers), 1,2,3-trichlorobenzene, 1,2,4-trichlorobenzene, 1,3,5-trichlorobenzene, trichlorobenzenes (sum of the 3 isomers), hexachlorobenzene, pentachlorobenzene

hexachlorobutadiene

PARTICULARITIES



For the group of parameters: hexachlorobutadiene, chlorobenzenes and nitro-aromatics, you will receive a concentrated solution in addition to the bottles of waste water. The analyses have to be carried out with the reconstituted samples.

'Environment approval': this is an additional proficiency test identical to the tests of programme 4E but at low concentration levels to meet the requirements of French legislation (contact us for the concentration ranges).

PROGRAMME 4F: METHANOL IN WASTE WATERS

€ 99 excl. VAT - total amount for 1 test (excluding transport costs)

5 participants in 2024 – EXPERIENCE > 5 YEARS



Need to test another method, evaluate your staff?

Order **additional test samples** (parcel in its entirety): € 50 excl. VAT (excluding transport costs)

1 SHIPMENT / YEAR - REFRIGERATED PARCEL

Month	1	2	3	4	5	6	7	8	9	10	11	12
Test Matrix									25M4F.1 Waste water			

Parameters to analyse

methanol

PARTICULARITIES

It is possible that the number of results reported is not sufficient for statistical processing of the data. In this case, comments on the participants' performance will be included in the report.

PROGRAMME 20B: CHLOROPHENOLS IN WASTE WATERS



€ 195 excl. VAT - total amount for 2 tests (excluding transport costs)

20 participants in 2024 – EXPERIENCE: 15 YEARS



Need to test another method, evaluate your staff?

Order **additional test samples** (parcel in its entirety): € 50 excl. VAT (excluding transport costs)

2 SHIPMENTS AVAILABLE / YEAR - REFRIGERATED PARCEL

Month	1	2	3	4	5	6	7	8	9	10	11	12
Test	25M20B.1					25M20B.2						
Matrix	Waste water					Waste water						

Parameters to analyse for each shipment

2-chlorophenol, 3-chlorophenol, 4-chlorophenol, chlorophenols (sum of the 3 isomers),
2,4-dichlorophenol,
dichlorophenols (sum of the 6 isomers),
2,4,5-trichlorophenol, 2,4,6-trichlorophenol,
trichlorophenols (sum of the 6 isomers), pentachlorophenol, 4-chloro-3-methylphenol

PARTICULARITIES



You will receive a concentrated solution in addition to the bottles of waste water. The analyses have to be carried out with the reconstituted samples.

PROGRAMME 21B: ALKYLPHENOLS IN WASTE WATERS



€ 191 excl. VAT - total amount for 2 tests (excluding transport costs)

14 participants in 2024 – EXPERIENCE: 15 YEARS



Need to test another method, evaluate your staff?

Order **additional test samples** (parcel in its entirety): **€ 50 excl. VAT** (excluding transport costs)

2 SHIPMENTS AVAILABLE / YEAR - REFRIGERATED PARCEL

Month	1	2	3	4	5	6	7	8	9	10	11	12
Test	25M21B.1					25M21B.2						
Matrix	Waste water					Waste water						

Parameters to analyse for each shipment

4-n-nonylphenol [CAS 104-40-5],
4-nonylphenols [CAS 84852-15-3],
4-tert-octylphenol [CAS 140-66-9],
nonylphenols (mix of linear or branched),
p-(n-octyl)phenol [CAS 1806-26-4],
p-octylphenols (mix of isomers)^[1]

^[1] parameter not covered by accreditation (see general conditions of registration)

PARTICULARITIES



You will receive a concentrated solution in addition to the bottles of waste water. The analyses have to be carried out with the reconstituted samples.

PROGRAMME 22B: CHLOROANILINES IN WASTE WATERS



€ 162 excl. VAT - total amount for 2 tests (excluding transport costs)

8 participants in 2024 – EXPERIENCE: 15 YEARS



Need to test another method, evaluate your staff?

Order **additional test samples** (parcel in its entirety): € 45 excl. VAT (excluding transport costs)

2 SHIPMENTS AVAILABLE / YEAR - REFRIGERATED PARCEL

Month	1	2	3	4	5	6	7	8	9	10	11	12
Test	25M22B.1					25M22B.2						
Matrix	Waste water					Waste water						

Parameters to analyse for each shipment

2-chloroaniline, 3-chloroaniline, 4-chloroaniline, Chloroanilines (sum of the 3 isomers),
3,4-dichloroaniline, 4-chloro-2-nitroaniline

PARTICULARITIES



You will receive a concentrated solution in addition to the bottles of waste water. The analyses have to be carried out with the reconstituted samples.

For some parameters, it is possible that the number of results reported is not sufficient for statistical processing of the data. In this case, comments on the participants' performance will be included in the report.

PROGRAMME 23B: ORGANOTIN COMPOUNDS IN WASTE WATERS



€ 193 excl. VAT - total amount for 2 tests (excluding transport costs)

19 participants in 2024 – EXPERIENCE: 15 YEARS



Need to test another method, evaluate your staff?

Order **additional test samples** (parcel in its entirety): € 50 excl. VAT (excluding transport costs)

2 SHIPMENTS AVAILABLE / YEAR - REFRIGERATED PARCEL

Month	1	2	3	4	5	6	7	8	9	10	11	12
Test Matrix		25M23B.1 Waste water					25M23B.2 Waste water					

Parameters to analyse for each shipment

monobutyltin cation, dibutyltin cation, tributyltin cation, triphenyltin cation, tetrabutyltin

PARTICULARITIES



You will receive a concentrated solution in addition to the bottles of waste water. The analyses have to be carried out with the reconstituted samples.

PROGRAMME 24B: BROMINATED DIPHENYL ETHERS IN WASTE WATERS



€ 254 excl. VAT - total amount for 2 tests (excluding transport costs)

10 participants in 2024 – EXPERIENCE: 15 YEARS



Need to test another method, evaluate your staff?

Order **additional test samples** (parcel in its entirety): € 65 excl. VAT (excluding transport costs)

2 SHIPMENTS AVAILABLE / YEAR - REFRIGERATED PARCEL

Month	1	2	3	4	5	6	7	8	9	10	11	12
Test Matrix		25M24B.1 Waste water								25M24B.2 Waste water		

Parameters to analyse for each shipment

BDE-28, BDE-47, BDE-99, BDE-100, BDE-153,
BDE-154, BDE-183, BDE-209

PARTICULARITIES



You will receive a concentrated solution in addition to the bottles of waste water. The analyses have to be carried out with the reconstituted samples.

PROGRAMME 24C: HBCDD IN FRESH WATERS AND HBCDD, HBB IN WASTE WATERS



€ 372 excl. VAT - total amount for 2 tests (excluding transport costs)

15 participants in 2024 – EXPERIENCE > 5 YEARS

2 SHIPMENTS AVAILABLE / YEAR - REFRIGERATED PARCEL

Month	1	2	3	4	5	6	7	8	9	10	11	12
Test				25M24C.1						25M24C.2		
Matrix				Natural water						Waste water		

Parameters to analyse

25M24C.1

alpha-HBCDD (alpha-hexabromocyclododecane)
beta-HBCDD (beta-hexabromocyclododecane)
gamma-HBCDD (gamma-hexabromocyclododecane)
total HBCDD (total hexabromocyclododecane)

25M24C.2

total HBCDD (total hexabromocyclododecane)
HBB (hexabromobiphenyl) ^[1]

^[1] parameter not covered by accreditation (see general conditions of registration)

PARTICULARITIES



You will receive a concentrated solution in addition to the bottles of natural water or waste water. The analyses have to be carried out with the reconstituted samples.

PROGRAMME 25B: BIPHENYL IN WASTE WATERS



€ 219 excl. VAT - total amount for 2 tests (excluding transport costs)

12 participants in 2024 – EXPERIENCE: 15 YEARS



Need to test another method, evaluate your staff?

Order **additional test samples** (parcel in its entirety): € 55 excl. VAT (excluding transport costs)

2 SHIPMENTS AVAILABLE / YEAR - REFRIGERATED PARCEL

Month	1	2	3	4	5	6	7	8	9	10	11	12
Test Matrix		25M25B.1 Waste water								25M25B.2 Waste water		

Parameters to analyse for each shipment

biphenyl

PARTICULARITIES



You will receive a concentrated solution in addition to the bottles of waste water. The analyses have to be carried out with the reconstituted samples.

PROGRAMME 26B: DEHP IN WASTE WATERS



€ 224 excl. VAT - total amount for 2 tests (excluding transport costs)

16 participants in 2024 – EXPERIENCE: 15 YEARS



Need to test another method, evaluate your staff?

Order **additional test samples** (parcel in its entirety): € 60 excl. VAT (excluding transport costs)

2 SHIPMENTS AVAILABLE / YEAR - REFRIGERATED PARCEL

Month	1	2	3	4	5	6	7	8	9	10	11	12
Test Matrix		25M26B.1 Waste water								25M26B.2 Waste water		

Parameters to analyse for each shipment

DEHP (Di(2-ethylhexyl)phthalate)

PARTICULARITIES



You will receive a concentrated solution in addition to the bottles of waste water. The analyses have to be carried out with the reconstituted samples.

PROGRAMME 27B: C10-C13 CHLOROALKANES (SCCPs) IN WASTE WATERS



€ 224 excl. VAT - total amount for 2 tests (excluding transport costs)

7 participants in 2024 – EXPERIENCE: 15 YEARS



Need to test another method, evaluate your staff?

Order **additional test samples** (parcel in its entirety): € 60 excl. VAT (excluding transport costs)

2 SHIPMENTS AVAILABLE / YEAR - REFRIGERATED PARCEL

Month	1	2	3	4	5	6	7	8	9	10	11	12
Test Matrix			25M27B.1 Waste water						25M27B.2 Waste water			

Parameters to analyse for each shipment

C10-C13 chloroalkanes

PARTICULARITIES



You will receive a concentrated solution in addition to the bottles of waste water. The analyses have to be carried out with the reconstituted samples.

It is possible that the number of results reported is not sufficient for statistical processing of the data. In this case, comments on the participants' performance will be included in the report.

PROGRAMME 28B: CHLOROACETIC ACID IN WASTE WATERS



€ 191 excl. VAT - total amount for 2 tests (excluding transport costs)

6 participants in 2024 – EXPERIENCE: 15 YEARS



Need to test another method, evaluate your staff?

Order **additional test samples** (parcel in its entirety): € 50 excl. VAT (excluding transport costs)

2 SHIPMENTS AVAILABLE / YEAR - REFRIGERATED PARCEL

Month	1	2	3	4	5	6	7	8	9	10	11	12
Test Matrix				25M28B.1 Waste water						25M28B.2 Waste water		

Parameters to analyse for each shipment

chloroacetic acid

PARTICULARITIES



You will receive a concentrated solution in addition to the bottles of waste water. The analyses have to be carried out with the reconstituted samples.

It is possible that the number of results reported is not sufficient for statistical processing of the data. In this case, comments on the participants' performance will be included in the report.

PROGRAMME 29B: EPICHLOROHYDRIN IN WASTE WATERS



€ 193 excl. VAT - total amount for 2 tests (excluding transport costs)

4 participants in 2024 – EXPERIENCE: 15 YEARS



Need to test another method, evaluate your staff?

Order **additional test samples** (parcel in its entirety): € 50 excl. VAT (excluding transport costs)

2 SHIPMENTS AVAILABLE / YEAR - REFRIGERATED PARCEL

Month	1	2	3	4	5	6	7	8	9	10	11	12
Test Matrix				25M29B.1 Waste water								25M29B.2 Waste water

Parameters to analyse for each shipment

epichlorohydrin

PARTICULARITIES



You will receive a concentrated solution in addition to the bottles of waste water. The analyses have to be carried out with the reconstituted samples.

It is possible that the number of results reported is not sufficient for statistical processing of the data. In this case, comments on the participants' performance will be included in the report.

PROGRAMME 52: AOX IN WATERS



€ 344 excl. VAT - total amount for 4 tests (excluding transport costs)

39 participants in 2024 - EXPERIENCE > 20 YEARS



Need to test another method, evaluate your staff?

Order **additional test samples** (parcel in its entirety): **€ 45 excl. VAT** (excluding transport costs)

4 SHIPMENTS AVAILABLE / YEAR - REFRIGERATED PARCEL

Month	1	2	3	4	5	6	7	8	9	10	11	12
Test	25M52.1					25M52.2			25M52.3		25M52.4	
Matrix	Clean water					Waste water			Clean water		Waste water	

Parameters to analyse for each clean water shipment

AOX

Parameters to analyse for each waste water shipment

AOX, SPE-AOX

PROGRAMME 55A: GLYPHOSATE, AMPA AND AMINOTRIAZOLE IN WASTE WATERS



€ 455 excl. VAT - total amount for 2 tests (excluding transport costs)

14 participants in 2024 – EXPERIENCE > 5 YEARS



Need to test another method, evaluate your staff?

Order **additional test samples** (parcel in its entirety): € 115 excl. VAT (excluding transport costs)

2 SHIPMENTS AVAILABLE / YEAR - REFRIGERATED PARCEL

Month	1	2	3	4	5	6	7	8	9	10	11	12
Test		25M55A.1						25M55A.2				
Matrix		Waste water						Waste water				

Parameters to analyse for each shipment

AMPA, aminotriazole, glyphosate

PARTICULARITIES



You will receive a concentrated solution in addition to the bottles of waste water. The analyses have to be carried out with the reconstituted samples.

PROGRAMME 59A: PERFLUORINATED COMPOUNDS IN WASTE WATERS



€ 499 excl. VAT - total amount for 2 tests (excluding transport costs)

23 participants in 2024 – EXPERIENCE > 5 YEARS



Need to test another method, evaluate your staff?

Order **additional test samples** (parcel in its entirety): € 125 excl. VAT (excluding transport costs)

2 SHIPMENTS AVAILABLE / YEAR - REFRIGERATED PARCEL

Month	1	2	3	4	5	6	7	8	9	10	11	12
Test Matrix			25M59A.1 Waste water						25M59A.2 Waste water			

Parameters to analyse for each shipment

PFBA [CAS 375-22-4], PFBS [CAS 375-73-5],
PFDA [CAS 335-76-2], PFDS [CAS 335-77-3],
PFDODA [CAS 307-55-1] (=PFDaA),
PFDODS [CAS 79780-39-5],
PFHpA [CAS 375-85-9], PFHpS [CAS 375-92-8],
PFHxA [CAS 307-24-4],
PFHxS - linear isomer [CAS 355-46-4] (=PFHS),
PFNA [CAS 375-95-1], PFNS [CAS 68259-12-1],
PFOA [CAS 335-67-1],
PFOS - linear isomer [CAS 1763-23-1],
PFPeA [CAS 2706-90-3], PFPeS [CAS 2706-91-4],
PFTDA [CAS 72629-94-8], PFTDS [CAS 791563-89-8], PFUnDA [CAS 2058-94-8], PFUnDS [CAS 749786-16-1]

PARTICULARITIES



You will receive a concentrated solution in addition to the bottles of waste water. The analyses have to be carried out with the reconstituted samples.



Other recommended proficiency test:

↳ **Programme 59B 'AOF in waste waters'**

PROGRAMME 59B: AOF IN WASTE WATERS

€ 145 excl. VAT - total amount for 1 test (excluding transport costs)

14 participants in 2024 – EXPERIENCE: 1 YEAR



Need to test another method, evaluate your staff?

Order **additional test samples** (parcel in its entirety): **€ 75 excl. VAT** (excluding transport costs)

1 SHIPMENT AVAILABLE / YEAR - REFRIGERATED PARCEL

Month	1	2	3	4	5	6	7	8	9	10	11	12
Test Matrix			25M59B.1 Waste water									

Parameters to analyse

AOF (Adsorbable Organic Fluorine)

PARTICULARITIES



You will receive a concentrated solution in addition to the bottles of waste water. The analyses have to be carried out with the reconstituted samples.



Other recommended proficiency test:

↳ Le programme 59A 'Perfluorinated compounds in waste waters'

PROGRAMME 71: PAHS AND PCBs IN WASTE WATERS



€ 871 excl. VAT - total amount for 2 tests (excluding transport costs)

37 participants in 2024 – EXPERIENCE > 25 YEARS



Need to test another method, evaluate your staff?

Order **additional test samples** (parcel in its entirety): € 220 excl. VAT (excluding transport costs)

2 SHIPMENTS AVAILABLE / YEAR - REFRIGERATED PARCEL

Month	1	2	3	4	5	6	7	8	9	10	11	12
Test			25M71.1							25M71.2		
Matrix			Waste water							Waste water		

Parameters to analyse for each shipment

PAHs: 2-methylfluoranthene, 2-methylnaphtalene, acenaphtene, anthracene, benzo[a]anthracene, benzo[a]pyrene, benzo[b]fluoranthene, benzo[g,h,i]perylene, benzo[k]fluoranthene, chrysene, dibenzo[a,h]anthracene, fluoranthene, fluorene, indeno[1,2,3 - cd]pyrene, naphtalene, phenanthrene, pyrene, acenaphtylene

PCBs: PCB 28, PCB 52, PCB 101, PCB 118, PCB 138, PCB 153, PCB 180

PROGRAMME 72A: PESTICIDES AND DEGRADATION RESIDUES - LIST 1 - IN WASTE WATERS



€ 859 excl. VAT - total amount for 2 tests (excluding transport costs)

21 participants in 2024 – EXPERIENCE > 25 YEARS



Need to test another method, evaluate your staff?

Order **additional test samples** (parcel in its entirety): **€ 215 excl. VAT** (excluding transport costs)

2 SHIPMENTS AVAILABLE / YEAR - REFRIGERATED PARCEL

Month	1	2	3	4	5	6	7	8	9	10	11	12
Test							25M72A.1				25M72A.2	
Matrix							Waste water				Waste water	

Parameters to analyse for each shipment

2,4'-DDD , 2,4'-DDE, 2,4'-DDT, 4,4'-DDD, 4,4'-DDE,
4,4'-DDT, acionifen, alachlor, aldrin, alpha-endosulfan, alpha-HCH, beta-endosulfan, beta-HCH, bifenox, chlordane (total), chlorfenvinphos, chlorpropham, chlorpyriphos-ethyl, cis-chlordane (CAS 5103-71-9), cypermethrin, delta-HCH, diazinon, dichlorvos, dicofol, dieldrin, endosulfan (total), endrin, epsilon HCH, HCH total (= sum of isomers alpha+beta+gamma+delta), heptachlor, heptachlorepoxyde (total), heptachlorepoxyde endo trans, heptachlorepoxyde exo cis, iprodione^[1], isodrin, lindane (gamma-HCH), mirex, oxadiazon, pendimethalin, quinoxifen, trans-chlordane (CAS 5103-74-2), tributyl phosphate, trifluralin

^[1] parameter not covered by accreditation (see general conditions of registration)

PARTICULARITIES

Particularity of the test design:

* You will have 2L of sample (2 bottles of 1L) to carry out one measurement of all the parameters.



You will receive a concentrated solution in addition to the bottles of waste water. **The analyses have to be carried out with the reconstituted samples.**

PROGRAMME 72B: PESTICIDES AND DEGRADATION RESIDUES - LIST 2 - IN WASTE WATERS



€ 494 excl. VAT - total amount for 2 tests (excluding transport costs)

19 participants in 2024 – EXPERIENCE > 25 YEARS



Need to test another method, evaluate your staff?

Order **additional test samples** (parcel in its entirety): **€ 125 excl. VAT** (excluding transport costs)

2 SHIPMENTS AVAILABLE / YEAR - REFRIGERATED PARCEL

Month	1	2	3	4	5	6	7	8	9	10	11	12
Test							25M72B.1				25M72B.2	
Matrix							Waste water				Waste water	

Parameters to analyse for each shipment

2,4-D, MCPA, atrazine, azoxystrobin, bentazon, boscalid, chlortoluron, cybutryn, cyprodinil, deisopropylatrazine, desethylatrazine, desethylterbuthylazine, diflufenicanil, diuron, imidaclopride, isoproturon, linuron, metaldehyde, metazachlor, nicosulfuron, simazine, tebuconazole, terbuthylazine, terbutryn, thiabendazole

PROGRAMME 73: ALKYLPHENOL ETHOXYLATES IN WASTE WATERS



€ 291 excl. VAT - total amount for 2 tests (excluding transport costs)

13 participants in 2024 – EXPERIENCE > 10 YEARS



Need to test another method, evaluate your staff?

Order **additional test samples** (parcel in its entirety): **€ 75 excl. VAT** (excluding transport costs)

2 SHIPMENTS AVAILABLE / YEAR - REFRIGERATED PARCEL

Month	1	2	3	4	5	6	7	8	9	10	11	12
Test	25M73.1						25M73.2					
Matrix	Waste water						Waste water					

Parameters to analyse for each shipment

NP1EO - 4-nonylphenol monoethoxylate
 NP2EO - 4-nonylphenol diethoxylate
 OP1EO - 4-octylphenol monoethoxylate
 OP2EO - 4-octylphenol diethoxylate

PARTICULARITIES



You will receive a concentrated solution in addition to the bottles of waste water. The analyses have to be carried out with the reconstituted samples.